

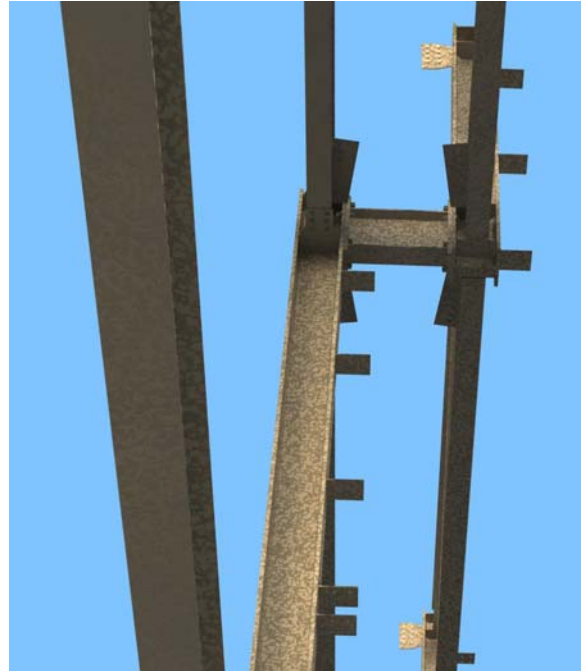


PCT Melting Furnace No. 4

Albany, Oregon



Construction Photograph



3D View of BIM Design Model

Facility Type:
Industrial

Project Type:
VAR Furnace Facility Expansion

Client:
Pacific Cast Technologies

Pillar's Responsibilities:
40-ton Power Supply Platform
Mat Foundation Design
Custom Steel Building Design
Existing Building Modifications
5-ton Bridge Crane Runways
Blast Walls & Doors Design
Control Room Structure

Pacific Cast Technologies wished to install a new vacuum arc reduction furnace in the middle of its existing 165,000 square foot facility. Pillar Consulting Group designed a custom steel structure and a mat foundation to overcome the layout and schedule challenges.

BIM played an important role in the success of the project. A detailed building model was created of the existing building and numerous underground pits, vaults and utilities. New structures were carefully coordinated with the existing infrastructure, which resulted in a clean, efficient and trouble-free facility expansion.

BIM

for more information contact Joe McCormick, P.E. at 541-752-9202 ext. 112



www.pillar-inc.com