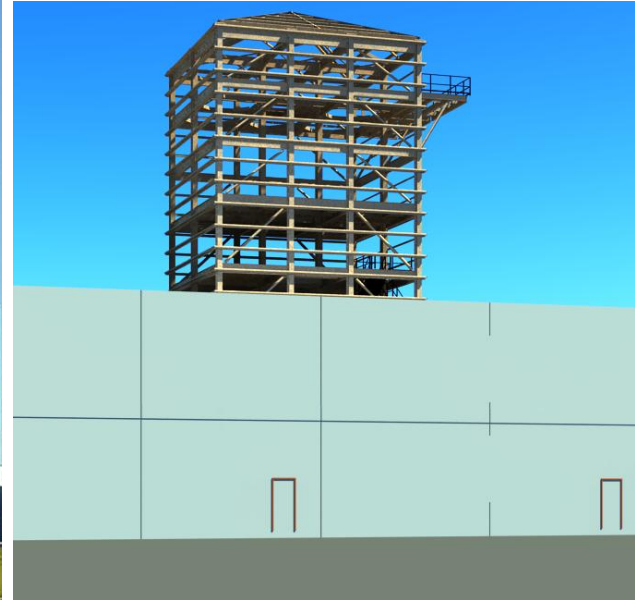




# Laticrete Facility

Lebanon, Oregon



**Construction Photograph**

**3D View of BIM Design Model**

Facility Type:

***Manufacturing/Warehouse***

Project Type:

***New Greenfield Facility***

Design-Build Contractor:

***R. L. Reimers Company***

Pillar's Responsibilities:

***Prime Professional***

***Planning & Land Use Application***

***Building Layout & Design***

***Tilt-up Concrete Design***

***Process Tower Structural Design***

***Site Civil Engineering***

***Public Utilities Improvements***

Laticrete International needed a fast track design for a new manufacturing, warehousing and shipping facility. Pillar Consulting Group teamed up with the general contractor and leveraged the power of Building Information Modeling to rapidly produce an accurate, integrated and readily constructible facility.

A 100 foot tall steel tower, supporting over 2 million pounds of bulk manufacturing materials had to be installed within the 80,000 square foot building footprint. BIM enabled concurrent development of both the building and tower designs, and eliminated potential conflicts between the two structures.

**BIM**

for more information contact Joe McCormick, P.E. at 541-752-9202 ext. 112



[www.pillar-inc.com](http://www.pillar-inc.com)