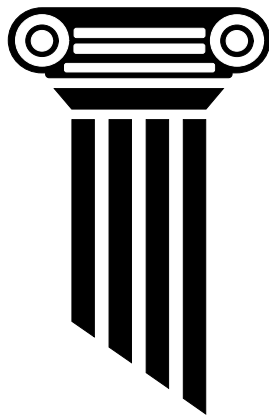


STATEMENT OF QUALIFICATIONS

BUILDING INFORMATION MODELING (BIM)



P I L L A R **C O N S U L T I N G** **G R O U P , I N C .**

www.pillar-inc.com

Pillar Consulting Group, Inc.
1600 SW Western Blvd, Suite 290
Corvallis, Oregon, 97333

Phone: (541) 752-9202
Fax: (541) 752-2587
info@pillar-inc.com

EXECUTIVE SUMMARY

Pillar Consulting Group, Inc. is qualified to produce building information models, acting as either the master model manager or as a member of a multi-disciplinary team. Our civil engineering capabilities encompass roadways, underground utilities, fire water supply, storage and distribution, pump and lift stations, retaining walls and underground structures. The firm employs Registered Civil Engineers with experience and a proven history of success on projects of all sizes. We adopted the use of BIM for the majority of our projects starting in 2006.

COMPANY PROFILE

Pillar Consulting Group, Inc. is a consulting firm specializing in professional engineering and project management. Our firm is founded by individuals with a vision to combine academic engineering research, practical engineering, and personal relationships into a high quality, beneficial experience for the client and professional.

The founders and active principals have civil engineering and mechanical engineering degrees and continue to take advanced level courses, as well as teach courses, at Oregon State University. We are convinced that our core value of continuing education produces a stronger work environment, which in turn produces better solutions for our clients. We pride ourselves on providing technically sound solutions and solid engineering expertise for our clients and for the general public.

In keeping with our founding vision of producing a high quality experience for the client and professional, we feel it is of utmost importance to develop a personal relationship with our clients. To this end, every client is personally served by one of the firm's principal engineers designated as the "principal-in-charge". The principal-in-charge is a "single-source" contact for the client to obtain answers and personal service from our firm. The principal-in-charge is responsible for managing all phases of a project from start to finish, which ensures a seamless project for our client. Likewise, we are committed to maintaining excellent relationships with regulatory and public agencies. We feel our strong commitment to solid relationships with all people involved in a project is vital in terms of business, as well as overall personal well being.

A strong core value and strategy at Pillar Consulting Group is our commitment to use technology as a competitive advantage. We have the highest quality computer workstations which have Pentium processors with full capabilities and access to the Internet and electronic mail services. We utilize email extensively, sending and receiving project information with all of our professional service vendors and many of our clients. All project drawings are created using industry standard Computer Aided Design software and we generate electronic files that can easily be transferred and used by vendors as well as clients. In addition, we have several civil and structural engineering software packages to increase the efficiency, and ultimately the economy, of our designs. We are able to use design software to evaluate multiple alternatives to ensure the best design possible in the shortest period of time.

Our organization of professionals is dedicated to providing superior service and personal attention on each project. We believe that by implementing our founding vision and core values, we will provide our clients with a high quality product and enjoyable experience.

FIRM QUALIFICATIONS

Our firm is qualified to utilize Building Information Modeling on building and facility projects. We have adopted Autodesk's REVIT BIM platform, and our engineers have had formal training in its use. Pillar Consulting Group has in-house expertise in the following areas of BIM:

Existing Buildings & Facilities

- Site investigations
- Record of existing dimensions
- Evaluation of existing structural system
- 3D visualization
- Integration of MEP with building model

Building Additions or Modifications

- Phasing and 4D analysis
- Demolition planning
- 3D visualization
- Conflict and collision analysis

New Buildings & Facilities

- Layout and configuration
- Parametric modeling
- Solar studies
- 3D visualization
- Virtual building walk-thru
- Multi-disciplinary collaboration
- Multi-disciplinary integration

Evaluation of Alternatives

- Generation of "What if" scenarios
- Multiple layout options
- Phasing studies
- CAD underlays
- Material take-offs

General BIM Capabilities

- 3D visualizations
- Parametric modeling
- 4D analysis and phases
- Worksharing and worksets
- Structural analysis software integration
- Custom families and components
- Rapid revisions
- Export to AutoCAD format
- Schedules and database generation
- 3D building sections & slices
- Rendering
- Lighting studies & visualizations
- LEED information generation

Pillar Consulting Group is committed to the BIM design process. Our clients benefit from use of this state-of-the art method of project delivery. BIM is much more than simply drafting in 3D. Our BIM models contain and can communicate information far beyond the graphic content seen in drawings. Parametric modeling allows sharing and retrieval of specifiable information in an efficient and intuitive manner. This allows other design professionals to understand and use our information directly in the development of their designs. This is far superior to simply under laying a CAD file and drawing over the top of it. Information is developed to capture the 3 dimensional, spatial aspects of the design, but doesn't stop there. Additional information can be captured and conveyed in the parametric components used to model a project, such as material properties, phase installed, unit cost, surface area, occupancy restrictions, heat loads, and so forth. We have utilized BIM for the following types of facilities:

- Offices
- Warehouses
- Foundries
- Pulp & paper
- Manufacturing
- Agricultural
- Trailer manufacturing
- Hazardous Materials Facilities
- Tank installations
- Industrial equipment installations

SAMPLE PROJECTS

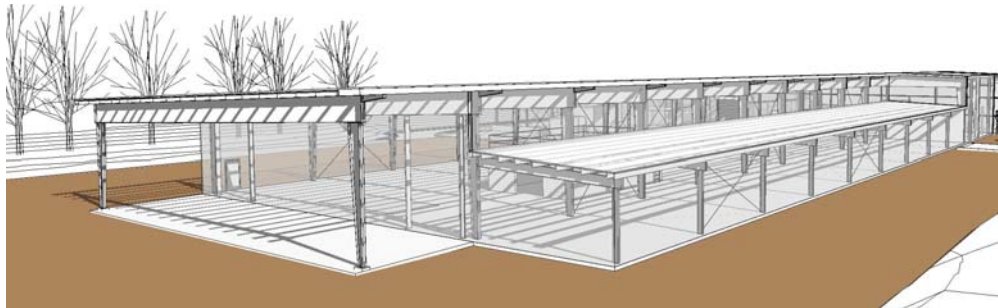
Pillar Consulting Group has an outstanding reputation for providing excellent engineering and project management services on a diverse range of projects. As a result of our ability to engineer and manage diverse projects, we have numerous repeat clients and satisfied customers. The following projects provide a representative sampling of our relevant work experience.

The following projects are those which Pillar Consulting Group, Inc. has **utilized BIM software**.

- **South Expansion, Pacific Cast Technologies, Albany, OR**

This project involved a 35,000 square foot addition to an existing 105,000 square foot metal foundry. Pillar Consulting Group developed a detailed building information model of a portion of the affected existing facility and exterior equipment and the proposed new building. The new building was configured to span over the top of a portion of the existing facility in order to allow continued operation of that portion of the plant during construction. 3D visualization proved to be invaluable.

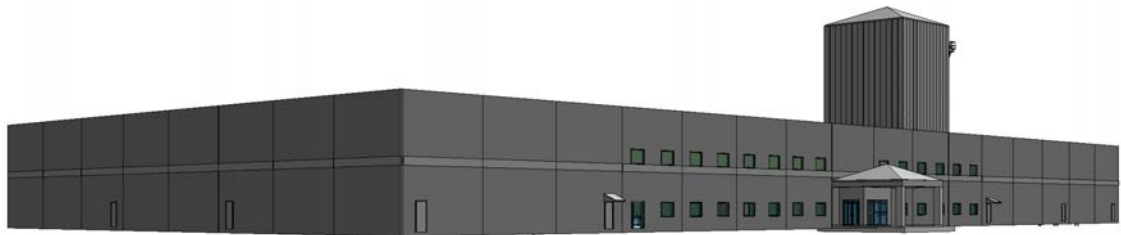
Client: Pacific Cast Technologies
Location: 150 SW Queen, Albany, OR
Completion date: 2008
Construction Value: \$6 million (estimated)



- **Laticrete Facility, Lebanon, OR**

Pillar's engineers broke into teams and independently developed detailed design information for three major modeling sets for this 82,000 square foot manufacturing, office and warehousing facility: building design, building structure, and process tower. The structural engineer utilized the building design model to accurately position openings in the tilt-up wall panels, while the building design team coordinated the interface of the tower with the roof structure on a real-time basis, as the structure was being developed.

Client: Western Warehouse
Location: 250 N Hansard, Lebanon, OR
Completion date: May 2008
Construction Value: \$8 million (estimated)



■ **Peak Sun Facility, Millersburg, OR**

Pillar Consulting Group, Inc. utilized BIM to quickly study various framing and bracing schemes for a two story food grade chemical processing facility. The building had to integrate specialized manufacturing equipment and accommodate various overhead clearance and access requirements. As the project was on a “fast track” basis, the BIM model enabled rapid generation of not only multiple options, but also of final design drawings and subsequent revisions.

Client: R. L. Reimers Co.

Location: Millersburg, OR

Completion date: 2008

Construction value: confidential



■ **Furnace 4 Facility Expansion, Pacific Cast Technologies, Albany, OR**

Pacific Cast Technologies needed to install a new melting furnace inside their existing building, but the furnace was taller than the existing building, and would be situated near numerous underground pits, vaults and utilities. A BIM model provided the necessary coordination and understanding needed to create a “building inside a building”. Pillar designed and modeled the structural steel building, mat foundation, blast walls and power supply mezzanine for this project using Autodesk’s REVIT STRUCTURE software.

Client: Pacific Cast Technologies

Location: 150 SW Queen, Albany, OR

Completion date: December, 2008

Construction Value: \$6 million (estimated)



Concentrated Hydrochloric Acid Tank Facility, Linn County, Oregon

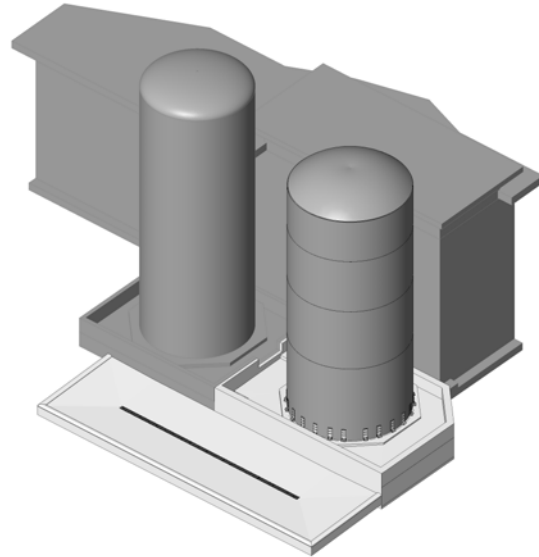
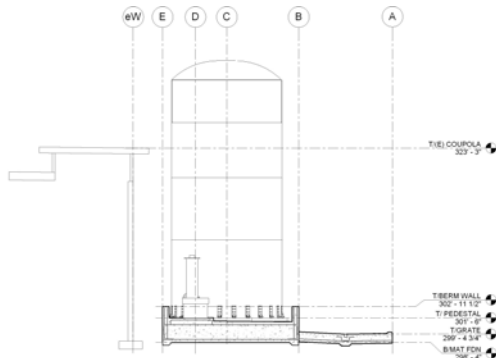
Pillar Consulting Group, Inc. utilized BIM to model existing and proposed new conditions for the expansion of a tank farm for a new 35,000 gallon concentrated hydrochloric acid tank facility. We performed the civil and structural engineering in addition to being responsible for the production of contract documents suitable for contractor bidding and build permit submittal.

Client: Confidential

Location: Confidential

Completion date: 2008

Construction Value: Confidential



We have the capabilities to manage architectural services, surveying, geotechnical engineering, traffic engineering, and landscaping, mechanical engineering, electrical engineering, and environmental studies. Our comprehensive team of professionals ensures the highest quality on all our projects.

Pillar Consulting Group, Inc. specializes in managing the full spectrum of services required to successfully complete building & facility projects. Technical design, analysis, planning, permitting, bidding and construction administration constitute the core skills of our unique team. We meet challenges with enthusiasm and expertise, and enjoy our work immensely! Please call our office if we can answer any questions regarding our experience or capabilities.

REFERENCES

Pillar Consulting Group has many repeat clients and satisfied customers that call upon us regularly to perform engineering and project management. We will gladly provide a list of references relevant to your proposed project upon request.